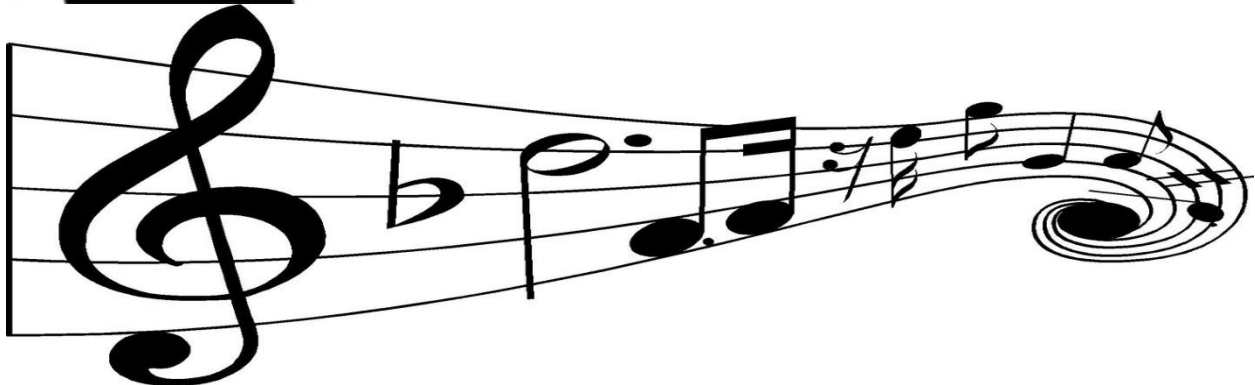


# Caring for your Oboe

---



Here are a few simple things that you should do to keep your Oboe in good working condition throughout the school year.



1. Assemble and disassemble your oboe carefully as per the instructions. (Never grab it by the keys.)
2. Swab out the instrument before putting it in the case. (Make sure it is in the case properly.)
3. The reed is extremely delicate! Place it carefully in its container after each use.
4. **Never** put anything on top of your oboe before closing the case.
5. Be sure that your case is properly latched before picking it up.
6. **Never** leave your oboe unattended.
7. **Never** place your oboe on a music stand or stand it up on the bell.
8. **Never** let other students play or handle your oboe!!
9. Have an I.D. tag on your case that has your name and school clearly written.
10. Practice your minimum 100 minutes per week so the oboe won't get lonely.